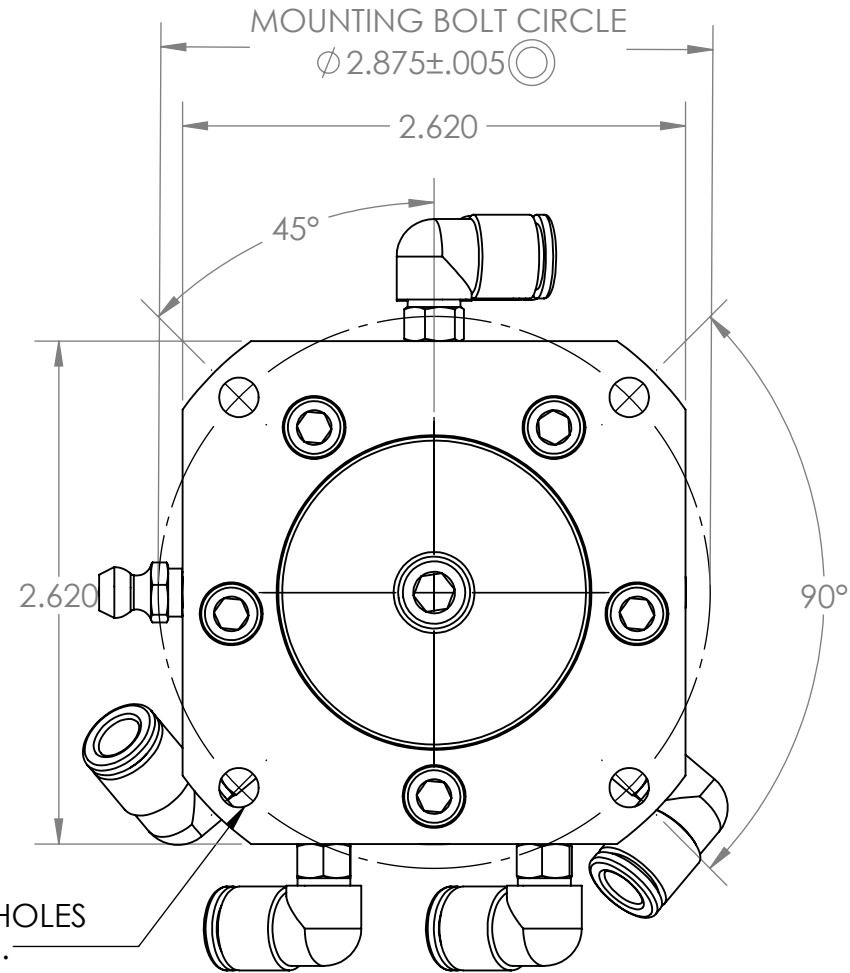
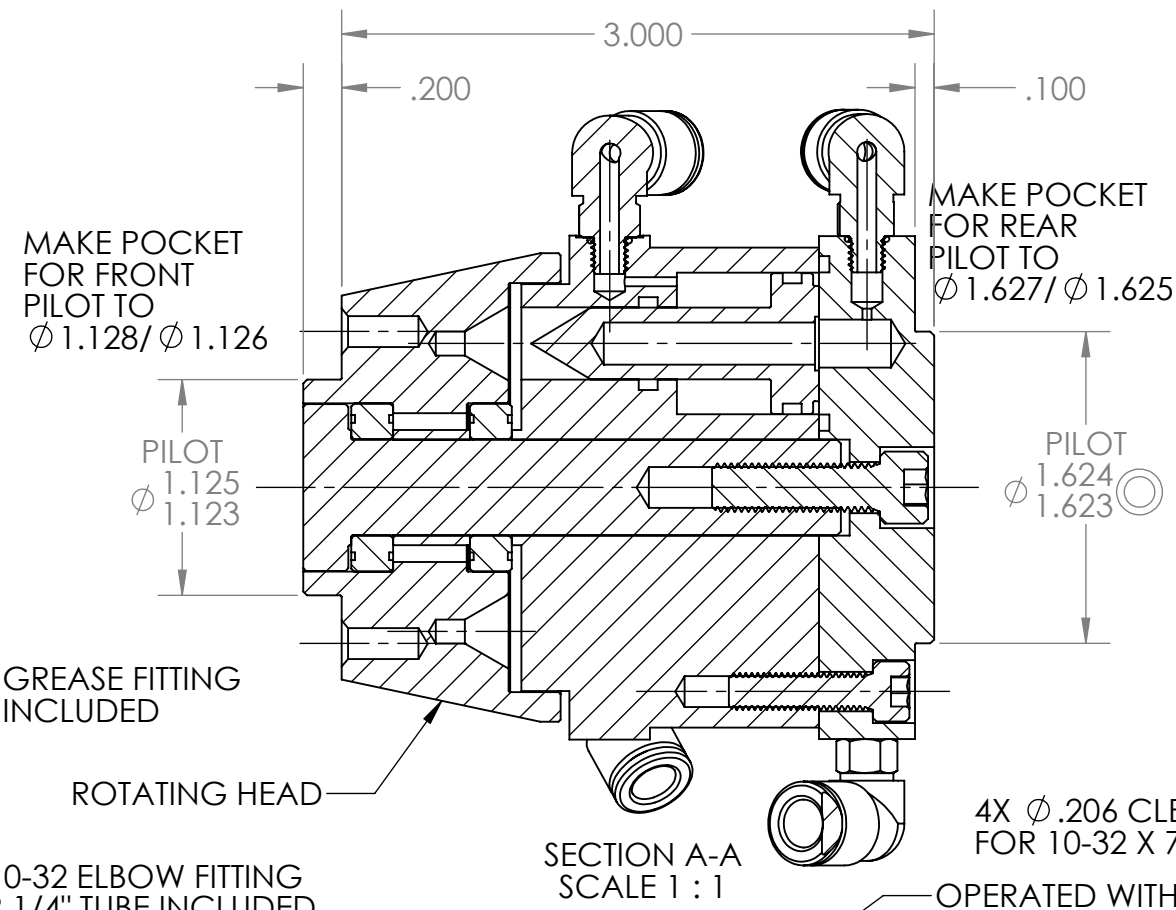
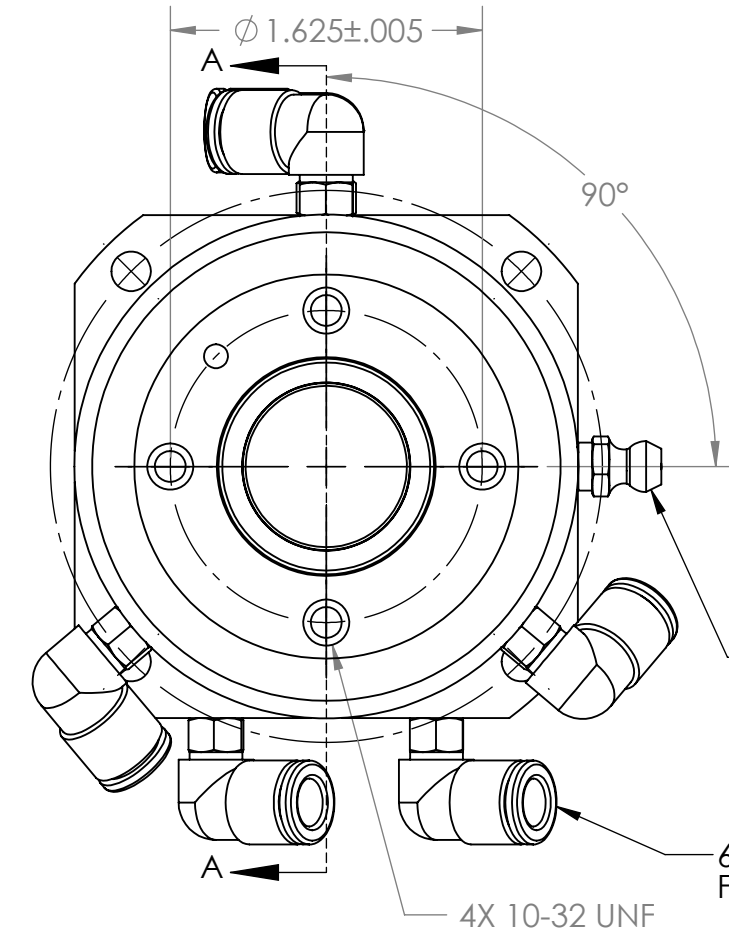


D

C

B

A



D

C

B

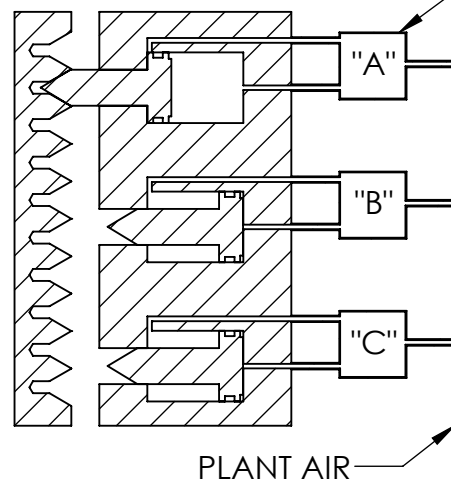
A

FOR MORE INFORMATION ON HOW TO USE: SEE SAMPLE CALCULATIONS.

1:1 SCALE

MAX OPERATING PRESSURE: 150PSI  
 STEPPING INCREMENT: 10° PER PULSE  
 NOM. STEPPING RATE: 250msec. PER PULSE  
 INCREMENTER WEIGHT: 1-1/2 LB  
 RATED TORQUE: 8in.lb.

MATERIAL  
 ALUMINUM AND STAINLESS-STEEL



TYPICAL CONTROL PROGRAM:

STEP NO.	STEP RATE (msec)	SHOT PIN		
		A	B	C
1	250	1	0	0
2	250	0	1	0
3	250	0	0	1
4	250	1	0	0
5	250	0	1	0
6	2000	0	0	1
7	250	0	1	0
8	250	1	0	0
9	250	0	0	1
10	250	0	1	0
11	250	1	0	0
12	2000	0	0	1

(1) INDICATES EXTENDING SHOT PIN.  
(0) INDICATES RETRACTING SHOT PIN.

FOR EXAMPLE PROGRAM:  
 THIS PROGRAM INDEXES THE ROTATING HEAD 60° CLOCKWISE IN 1-1/4 SECONDS AND RETURNS THE ROTATING HEAD COUNTERCLOCKWISE TO STEP NUMBER ONE IN 1-1/4 SECONDS. THERE IS A DWELL OF TWO SECONDS AT STEP NUMBER SIX.

**MACK AUTOMATION, FLAGSTAFF, AZ**

PART NAME	PART NO.	REV
ROTARY INCREMENTER - 10 DEGREE	4250-1032UNF	A

8 7 6 5 4 3 2 1